



40 Hotoft Road, Leicester, Leicestershire, LE5 1EF

£900 Per Month

THE PROPERTY

Located on Hotoft Road, 4 miles from the vibrant city centre of Leicester, this second-floor flat offers a delightful living experience. Spanning an impressive 602 square feet, the property features two spacious double bedrooms, making it ideal for a couple, small families, or individuals seeking extra space.

Upon entering, you will find a welcoming entrance hall with the bright lounge proving a perfect setting for relaxation.

The flat is designed with practicality in mind, boasting a utility room that adds convenience to your daily routine. The well-appointed bathroom ensures comfort and functionality for all.

Security is a priority in this building, with secure access providing peace of mind. The flat is available for immediate occupancy, allowing you to settle in without delay.

Located in a lively area of Leicester, you will have easy access to local amenities, shops, and transport links, making this property not only a comfortable home but also a gateway to the best the city has to offer.

This flat is a wonderful opportunity for those looking to embrace city living in a secure and inviting environment.

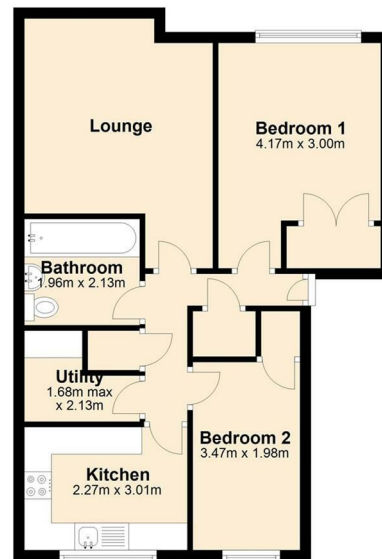
FOR VIEWINGS EMAIL THE AGENT

Council tax Band A
Deposit £1038

Don't miss your chance to make this lovely flat your new home.

SITUATION

Second Floor



Total area: approx. 54.9 sq. metres

Directions

Market House Market Sq, Aylesbury, HP1201TN

Tel: 01296 767555 Email: francis@360-properties.co.uk <https://www.360-properties.co.uk>